



MEETINGS IMAGINED... PEOPLE INSPIRED. MARRIOTT DELIVERED.

Your meeting is about more than just tables and chairs. That's why we start with people, understand their meeting purpose, and deliver not just a meeting but an experience.

Let's imagine the possibilities.



MARRIOTT HOTEL MANILA

MEETING SPACE CRAFTED FOR PERFORMANCE

Marriott Grand Ballroom features 28 versatile rooms that range from small meeting spaces to a 3,000-square meter main ballroom. Its biggest space, the main ballroom, can easily accommodate 4,000 guests for cocktails and 2,500 for banquet set-up when fully utilized. While guests can comfortably hold special events or meetings in any of the rooms, Marriott Grand Ballroom’s wide lobby and foyer can provide additional space for trade fairs, exhibitions, and other events. It also introduces the concept of Sky Boxes, which are meeting rooms with unobstructed view of the main ballroom, configurable for a variety of purposes.

GROUND FLOOR

	DIMENSION		CAPACITY					
	FLOOR AREA (sqm)	CEILING HT. (m)	THEATER	BANQUET	COCKTAIL	CLASSROOM	BOARDROOM	U-SHAPE
Diplomatic Hall 1	285.85	8.9	243	156	240	114	48	38
Diplomatic Hall 2	204.52	8.9	195	105	195	96	48	33
Diplomatic Hall 1&2	470.38	8.9	438	216	430	264	60	63
Ceremonial Hall	488.59		260	216	430	168	48	51
Diplomatic Hall Lounge / Bridal Suite	54.14							
Ceremonial Hall Lounge / Bridal Suite	54.14							
Executive 1 West	75.68	4.5	50	36	115	36	24	24
Executive 3 West	75.54	4.5	50	36	115	36	24	24
Executive Suite 1&3 West	152.22	4.5	130	108	230	81	48	38
Executive 2 West	75.67	4.5	50	36	80	36	24	24
Executive 5 West	149.92	4.5	144	96	180	96	44	45
Executive 6 West	118.94	4.5	60	48	100	45	26	24
Executive 7 East	127.28	4.5	120	72	150	72	38	33
Executive 9 East	126.89	4.5	120	72	150	72	38	33
Executive suite 7&9 East	254.15	4.5	260	144	300	162	50	48
Executive 8 East	75.67	4.5	50	36	115	36	24	24
Executive 10 East	75.56	4.5	50	36	115	36	24	24
Executive 8&10 East	151.23	4.5	130	108	230	81	48	38

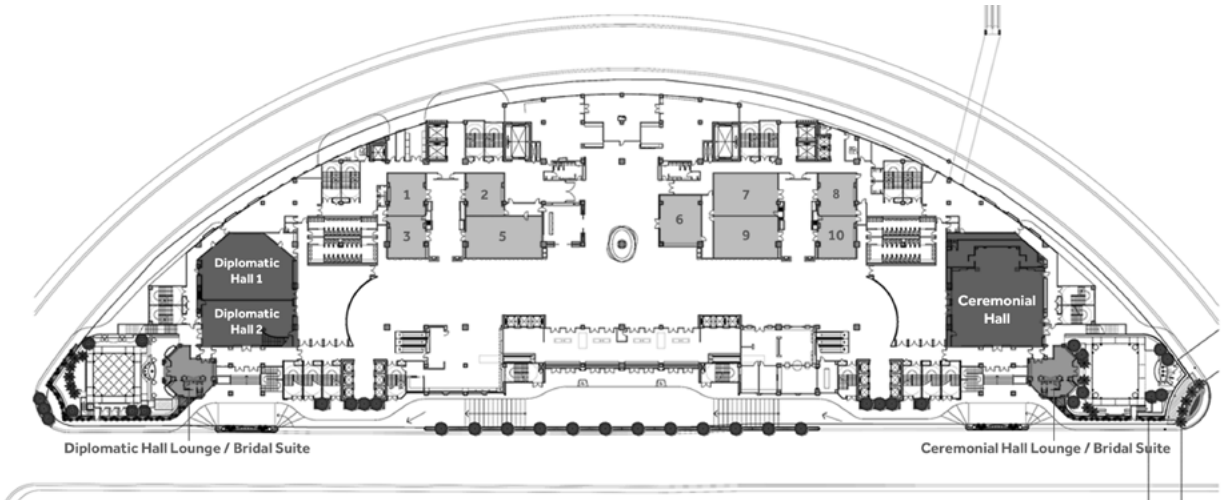
2ND FLOOR

	DIMENSION		CAPACITY					
	FLOOR AREA (sqm)	CEILING HT. (m)	THEATER	BANQUET	COCKTAIL	CLASSROOM	BOARDROOM	U-SHAPE
Ballroom A	747.33	12	840	552	950	408	95	99
Ballroom B	700.95	12	756	552	900	423	95	96
Ballroom C	700.95	12	756	552	900	423	95	96
Ballroom D	747.33	12	840	552	950	468	95	99
GRAND BALLROOM	2,896.56	12	3696	2496	3700	1690	380	390
Executive 11 West	126.14	4.5	112	72	85	78	30	27
Executive 12 West	131.76	4.5	112	72	85	78	30	27
Executive Suite 10&11 West	257.9	4.5	224	180	180	156	60	57
Executive 15 West	93.33	4.5	72	48	90	45	24	24
Executive 16 West	43.63	4.5	24	36	15	12	14	15
Executive 17 West	129.75	4.5	84	72	90	60	30	30
Executive 18 West	54.9	4.5	36	24	50	27	26	15
Executive 19 West	43.63	4.5	24	36	15	12	14	15
Executive 20 West	93.33	4.5	72	48	90	45	24	24

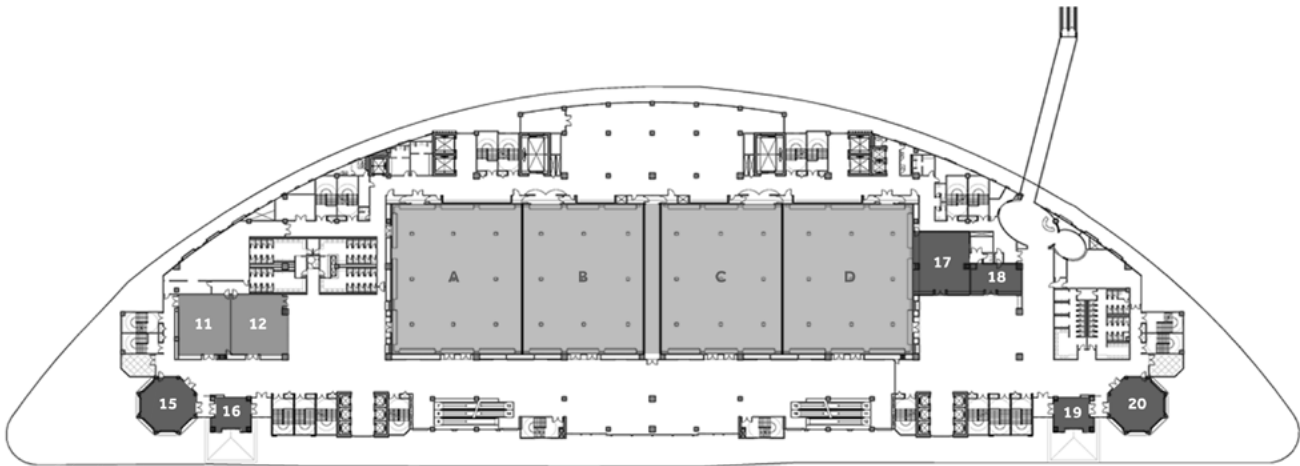
3RD FLOOR

	DIMENSION		CAPACITY					
	FLOOR AREA (sqm)	CEILING HT. (m)	THEATER	BANQUET	COCKTAIL	CLASSROOM	BOARDROOM	U-SHAPE
VIP West	285	4	312	192	242	144	42	54
VIP West A	143.56	4	130	96	116	72	36	36
VIP West B	141.78	4	130	96	116	72	36	36
VIP East	285	4	312	192	242	144	42	54
VIP East A	141.78	4	130	96	116	72	36	36
VIP East B	143.56	4	130	96	116	72	36	36
West Gazebo	93.27		45	48	90			
East Gazebo	93.27		45	48	90			
VIP Rooms/ Skybox 1	130.94	4.25						
VIP Rooms/ Skybox 2	80.58	4.25						
VIP Rooms/ Skybox 3	90.13	4.25						
VIP Rooms/ Skybox 5	90.13	4.25						
VIP Rooms/ Skybox 6	80.58	4.25						
VIP Rooms/ Skybox 7	130.94	4.25						

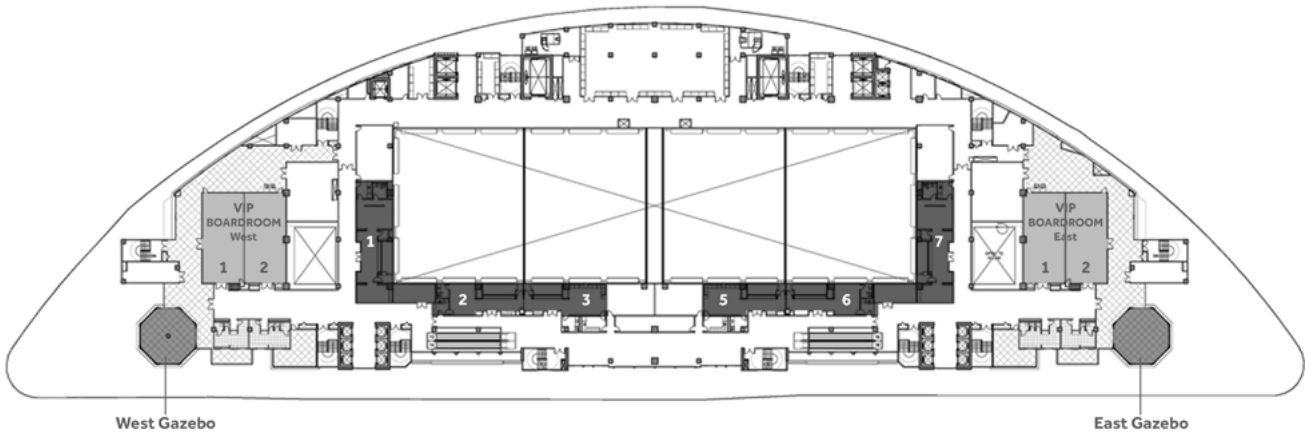
Ground Floor



2nd Floor



3rd Floor



MARRIOTT HOTEL MANILA

Manila Ballroom is the perfect venue for social and business functions. It accommodates up to 1,000 persons for a sit-down or cocktail event. For smaller meetings and business seminars, six meeting rooms, The Den and The Hub, provide cozy yet functional venues—all designed to make any business activity a huge hit and glorious dreams for a social event come to reality. The Garden Rooms is equipped with the latest audio-visual equipment; big LCD screens matched with drop-down projectors, a 72-inch TV, and built in centralized speakers. The spacious 400 sq m room can be divided into three function rooms. Marriott Hotel Manila’s certified Events Manager are well-versed with the minutest detail of any event and will deliver the most productive and successful outcome for any occasion.

GROUND FLOOR

	DIMENSION			CAPACITY					
	FLOOR AREA (sqm)	CEILING HT. (m)	SIZE	THEATER	BANQUET	COCKTAIL	CLASSROOM	BOARDROOM	U-SHAPE
Manila Ballroom A1 or A2	152	6	12.4 x 12.4	142	90	165	62	36	27
Manila Ballroom A, B & C	305	6	24.7 x 12.4	285	210	330	125	72	60
Manila Ballroom A,B or BC	610	6	24.7 x 24.7	570	420	660	250	96	72
Manila Ballroom	916	6	24.7 x 37.1	850	630	990	375	126	102
Garden Room 1	51	4.5	6.7 x 7.6	30	30	40	18	16	16
Garden Room 2	152	4.5	9.7 x 16	88	100	150	54	30	24
Garden Room 3	202	4.5	13.5 x 15.1	96	140	196	48	36	30
Garden room	405	4.5	13.5 x 38.6	214	270	386	84	72	66

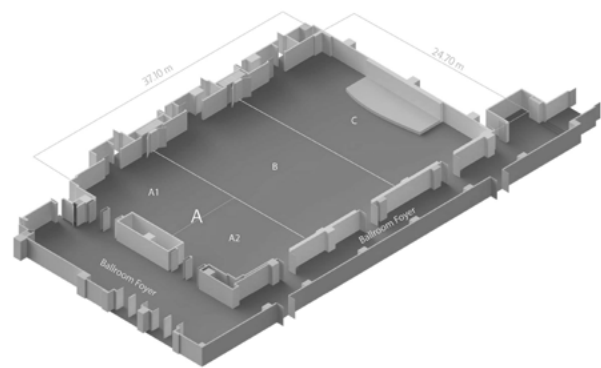
2ND FLOOR

	DIMENSION			CAPACITY					
	FLOOR AREA (sqm)	CEILING HT. (m)	SIZE	THEATER	BANQUET	COCKTAIL	CLASSROOM	BOARDROOM	U-SHAPE
Meeting Rooms	56	2.6	7.4 x 7.4	50	30	60	24	16	14
Meeting Rooms 1, 2, 3, 5 or 6	42.6	2.6	7.4 x 5.8	45	20	50	18	14	12
Meeting Rooms 6									
The Hub	203	2.6	10 x 17		70	60			
The Den	131	2.6	19.9 x 12.5	50	40	60	27	20	18

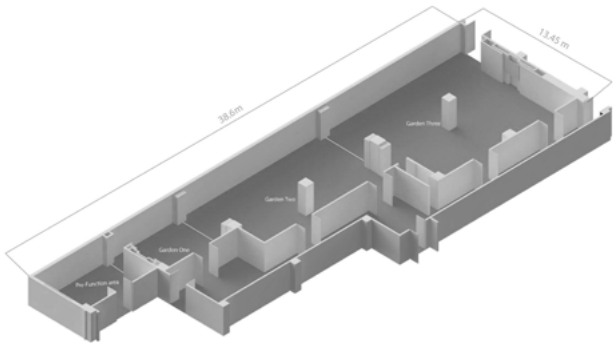
8TH FLOOR

	DIMENSION			CAPACITY					
	FLOOR AREA (sqm)	CEILING HT. (m)	SIZE	THEATER	BANQUET	COCKTAIL	CLASSROOM	BOARDROOM	U-SHAPE
The View		2.6		100	40	40	40	30	24

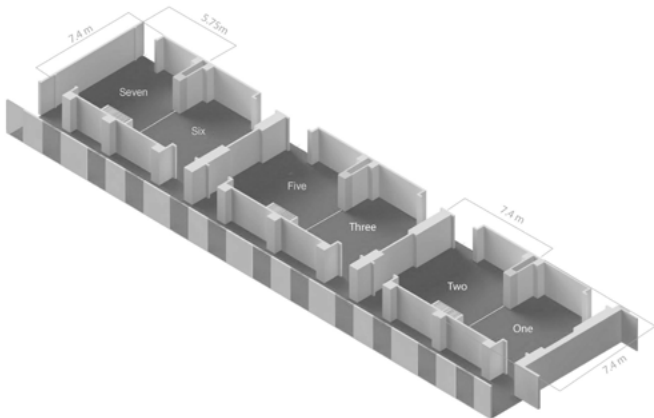
Manila Ballroom



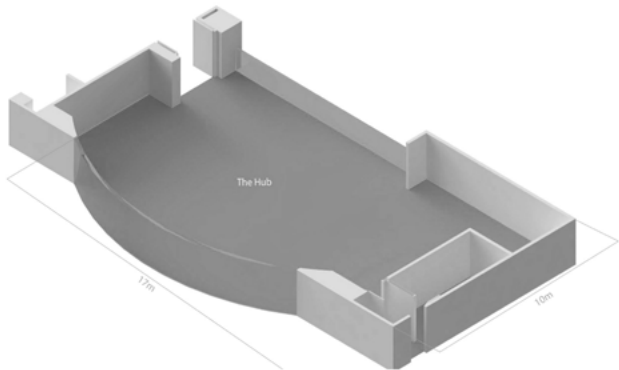
Garden Rooms



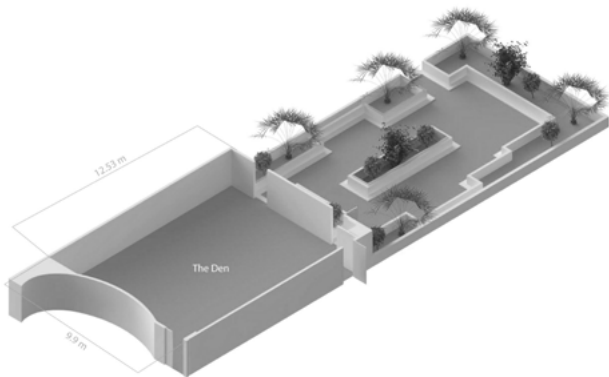
Meeting Rooms



The Hub



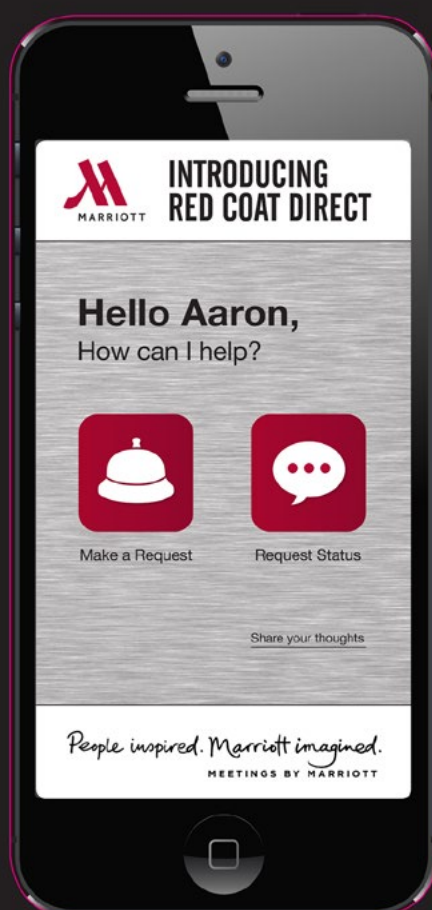
The Den



MARRIOTT HOTEL MANILA

KEEP YOUR EVENT IN HAND.

With our personalized app, you can manage event details, make real-time requests and connect with our staff - all from the palm of your hand. With Marriott's Meeting Services App, you can manage your event without ever leaving your seat. It handles the details so that you can get back to what matters most - the people. Relieves the stress of time, space, and language barriers by connecting planners and hotel teams on any web-enabled device in real time 24/7. Creates more time to empower, showcase and personalize every event from planning through billing.



○ UNDERSTATED TECHNOLOGY

- Further enhancing the event experience are 176 programmable pillow lights and adjustable ceiling lights that change to 360 colors. The system also allows adjusting the ceiling height from 12 meters to 10 meters, providing utmost flexibility for different kinds of events. Each section is also equipped with its own professional high steel platforms, catwalk structures, and 9 utility boxes that provide exhibition suppliers with data, internet, water, and even drainage.



LOCATION

Marriott Hotel Manila stands as a centerpiece of the dynamic and exciting mixed-use development of Resorts World Manila, located directly opposite Ninoy Aquino International Airport Terminal 3. A destination in itself, this 5 star property is poised to become the Philippines' most unique and comprehensive destination for Meetings, Inentives, Conferences and Exhibitions.

GUEST SERVICES

Offering Mobile Check-In and Checkout • Wireless High-Speed Internet • Valet Parking • Salon • Business Center

ACCOMMODATIONS

Committed to a smoke-free environment • 570 Spacious Rooms and Suites • Luxurious bedding with down comforters and cotton linens • 48 to 55-inch LED smart TV • Individually controlled air-conditioning and mood lighting • Stunning views of Villamor Golf Course and Makati skyline

MEETING FACILITIES

RedCoatSM Direct, a complimentary app for meeting management at your fingertips • 5 Ballrooms • 34 meeting rooms • 4 outdoor function spaces • Event Studio

RESTAURANTS & LOUNGES

An array of dining options to choose from:

- Cru Steakhouse, serves prime steaks and an innovative menu
- Marriott Café, all-day buffet and equally impressive a la carte choices
- Man Ho, Marriott's signature Chinese Restaurant
- Still, tea and whisky lounge at the heart of the West Wing
- Greatroom, lobby lounge and bar
- Mian, Asian inspired noodle bar
- Crema, gourmet coffee and pastry shop
- Gourmet Express, pizza, pasta and chicken delivery
- Manila Life Cafe, Filipino favorites with a modern twist at NAIA Terminal 3

RECREATION & LEISURE

Quan Spa • Health Club • Outdoor Pool • The Deck • Sauna • Steam Room
• Heated Whirlpools • Adjacent Golf Course • Newport Performing Arts Theater • Newport Mall • High-End Cinemas • Arcade Games • Casino

Marriott Hotel Manila

2 Resorts Drive, Pasay City, Metro Manila 1309 Philippines

T: 632.988.9999 | F: 632.836.9998

Sales Fax: 632.988.9946 | Email: marriotthotelmanila@marriott.com

MANILAMARRIOTT.COM

    @marriottmanila